

**Battery Trays / Heavy Duty Battery Trays / Refrigerator/Freezer Trays  
Gas Bottle Trays / Cargo Trays / Heavy Duty Cargo Trays  
2-Way Heavy Duty Trays / Special Application Trays**

This company division produces the largest selection of custom built sliding storage trays of their types in the U.S. transportation industry. The purpose of the products is to provide the user safe storage yet easy access for vehicle battery maintenance, LP gas bottle refilling, stowage and access of heavy cargo, portable refrigeration, as well as other onboard gear. These products are custom built for original equipment producers of trucks, buses, trailers, emergency vehicles, wreckers, as well as specialty and recreational vehicles. We also make them available through distributors and dealers. For the name of the nearest sliding tray installing dealer, contact our customer service department via (phone) 574-294-5611, (fax) 574-262-8845, or e-mail, [keyline@keylinesaleselkhart.com](mailto:keyline@keylinesaleselkhart.com). If you are a "DIY" person, we can also assist you in direct purchases.



	OVERALL WIDTH	OVERALL DEPTH	OVERALL HEIGHT	WEIGHT	USABLE WIDTH	USABLE DEPTH	BEARING TYPE	EXTENSION %
<b>COBT27-2RL</b>	16- $\frac{1}{4}$ "	17- $\frac{3}{4}$ "	7"	23 lbs.	13- $\frac{3}{8}$ "	14- $\frac{1}{2}$ "	BALL	100%



	OVERALL WIDTH	OVERALL DEPTH	OVERALL HEIGHT	WEIGHT	USABLE WIDTH	USABLE DEPTH	BEARING TYPE	EXTENSION %
<b>NLBT-D</b>	10- $\frac{3}{4}$ "	23- $\frac{1}{4}$ "	3- $\frac{1}{2}$ "	26 lbs.	7- $\frac{3}{4}$ "	21- $\frac{1}{2}$ "	BALL	100%



	OVERALL WIDTH	OVERALL DEPTH	OVERALL HEIGHT	WEIGHT	USABLE WIDTH	USABLE DEPTH	BEARING TYPE	EXTENSION %
BT2415	24- <sup>1</sup> / <sub>4</sub> "	14- <sup>3</sup> / <sub>4</sub> "	3- <sup>3</sup> / <sub>4</sub> "	29 lbs.	23- <sup>3</sup> / <sub>4</sub> "	13- <sup>1</sup> / <sub>2</sub> "	BALL	100%



	OVERALL WIDTH	OVERALL DEPTH	OVERALL HEIGHT	WEIGHT	USABLE WIDTH	USABLE DEPTH	BEARING TYPE	EXTENSION %
<b>NBT2424-RL</b>	24"	23- $\frac{1}{4}$ "	7"	30 lbs.	21- $\frac{1}{2}$ "	14- $\frac{3}{8}$ "	ROLLER	70%
<b>NBT3232-RL</b>	32- $\frac{3}{4}$ "	31- $\frac{1}{2}$ "	8- $\frac{1}{4}$ "	77 lbs.	28- $\frac{5}{8}$ "	21"	ROLLER	70%
<b>NBT4-8D</b>	53"	28- $\frac{3}{8}$ "	8- $\frac{1}{4}$ "	100 lbs.	49"	17- $\frac{1}{2}$ "	ROLLER	70%



	OVERALL WIDTH	OVERALL DEPTH	OVERALL HEIGHT	WEIGHT	USABLE WIDTH	USABLE DEPTH	BEARING TYPE	EXTENSION %
<b>BT6TBXNR3</b>	39- $\frac{3}{4}$ "	28- $\frac{1}{4}$ "	7"	74 lbs.	35- $\frac{1}{2}$ "	14- $\frac{1}{4}$ "	ROLLER	70%

# Journeyman® Heavy Duty Battery Trays



	OVERALL WIDTH	OVERALL DEPTH	OVERALL HEIGHT	WEIGHT	USABLE WIDTH	USABLE DEPTH	BEARING TYPE	EXTENSION %
<b>NBT1430-2P</b>	13- $\frac{3}{4}$ "	30- $\frac{1}{4}$ "	6"	48 lbs.	10- $\frac{3}{8}$ "	29- $\frac{1}{2}$ "	ROLLER	70%
<b>NBT1731-2P</b>	17- $\frac{1}{2}$ "	31- $\frac{1}{2}$ "	6"	59 lbs.	14- $\frac{1}{4}$ "	31"	ROLLER	70%
<b>NBT2524-2P</b>	24- $\frac{3}{4}$ "	23- $\frac{1}{4}$ "	7"	50 lbs.	21- $\frac{1}{8}$ "	22- $\frac{5}{8}$ "	ROLLER	70%
<b>NBT2530-2P</b>	24- $\frac{5}{8}$ "	29- $\frac{5}{8}$ "	6- $\frac{7}{8}$ "	52 lbs.	21- $\frac{1}{2}$ "	29"	ROLLER	70%



	OVERALL WIDTH	OVERALL DEPTH	OVERALL HEIGHT	WEIGHT	USABLE WIDTH	USABLE DEPTH	BEARING TYPE	EXTENSION %
<b>GRFT50-RL</b>	28- $\frac{1}{4}$ "	20- $\frac{1}{2}$ "	9- $\frac{3}{4}$ "	25 lbs.	26"	15- $\frac{3}{8}$ "	BALL	100%



	OVERALL WIDTH	OVERALL DEPTH	OVERALL HEIGHT	WEIGHT	USABLE WIDTH	USABLE DEPTH	BEARING TYPE	EXTENSION %
<b>HFT3722-RL</b>	37- $\frac{3}{4}$ "	22- $\frac{1}{4}$ "	7- $\frac{1}{8}$ "	60 lbs.	31- $\frac{3}{8}$ " +	19- $\frac{5}{8}$ "	BALL	200%
<b>HFT3726-RL</b>	37- $\frac{3}{4}$ "	26- $\frac{1}{4}$ "	7- $\frac{1}{8}$ "	62 lbs.	31- $\frac{3}{8}$ " +	19- $\frac{5}{8}$ "	BALL	200%

# Journeyman® Refrigerator Freezer Trays



	OVERALL WIDTH	OVERALL DEPTH	OVERALL HEIGHT	WEIGHT	USABLE WIDTH	USABLE DEPTH	BEARING TYPE	EXTENSION %
NFT2636-RL	26"	36-¼"	7-⅛"	81 lbs.	21-½"	33-⅞" +	BALL	200%



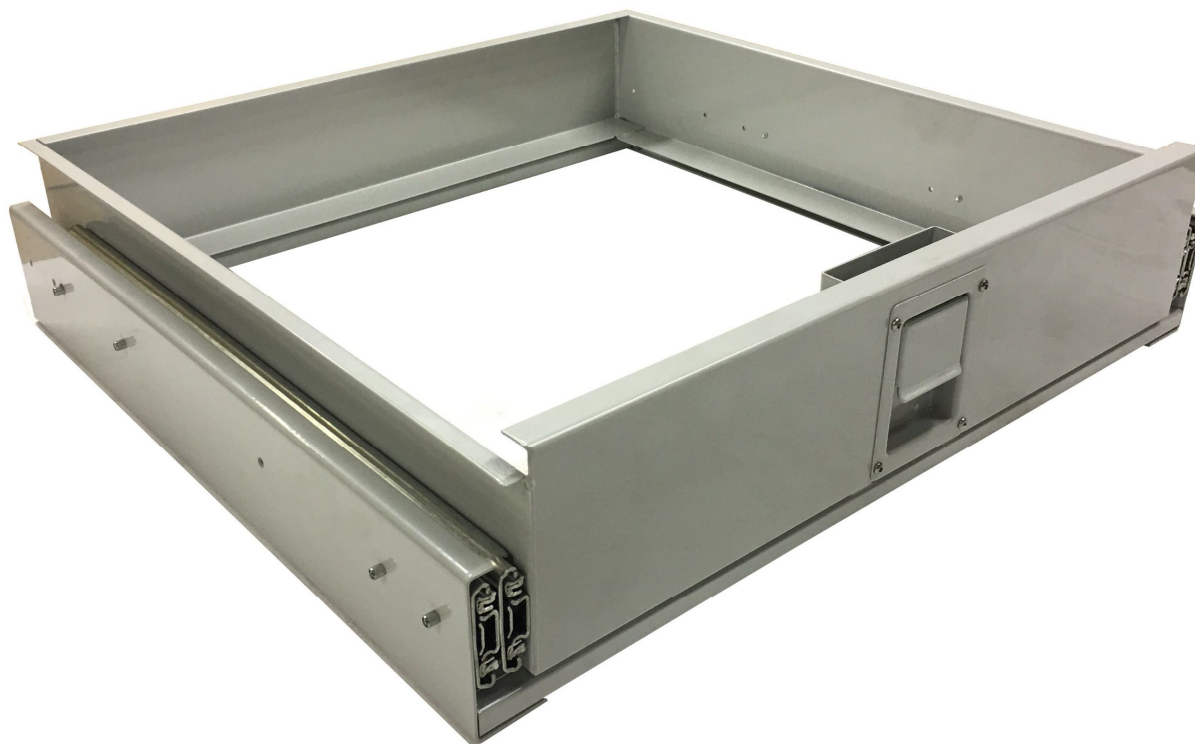
	OVERALL WIDTH	OVERALL DEPTH	OVERALL HEIGHT	WEIGHT	USABLE WIDTH	USABLE DEPTH	BEARING TYPE	EXTENSION %
RFTM630DRL-2X	19-⅞"	28-¼"	7-⅛"	53 lbs.	14-⅜"	26"	BALL	200%
RFTM640DRL-2X	19-⅞"	28-¾"	7-⅛"	55 lbs.	14-⅜"	26-½"	BALL	200%





	OVERALL WIDTH	OVERALL DEPTH	OVERALL HEIGHT	WEIGHT	USABLE WIDTH	USABLE DEPTH	BEARING TYPE	EXTENSION %
NCT2842-RL	42-½"	28-½"	6-¾"	157 lbs.	39-¼"	25-¼"	BALL	100%

Double Extension

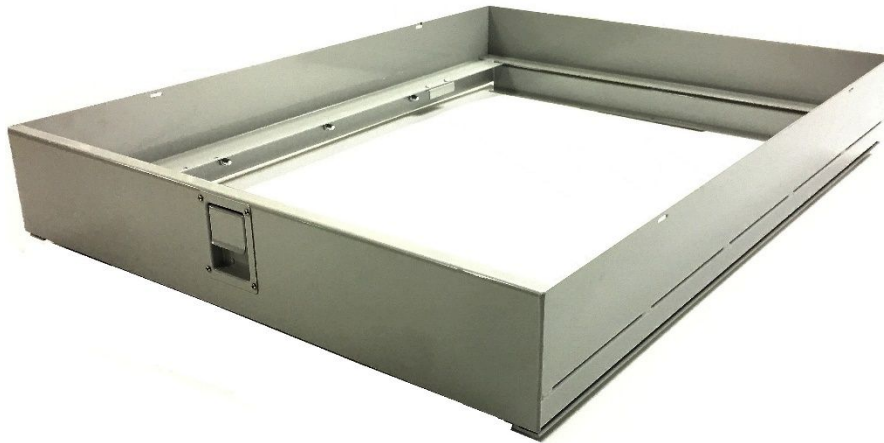


	OVERALL WIDTH	OVERALL DEPTH	OVERALL HEIGHT	WEIGHT	USABLE WIDTH	USABLE DEPTH	BEARING TYPE	EXTENSION %
NCT3229RL-2X	32"	29- $\frac{1}{4}$ "	7- $\frac{3}{8}$ "	62 lbs.	27- $\frac{5}{8}$ "	26"	BALL	200%

# Journeyman® One-Way Heavy Duty Cargo Trays

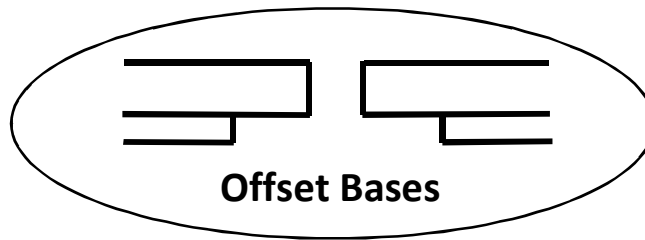
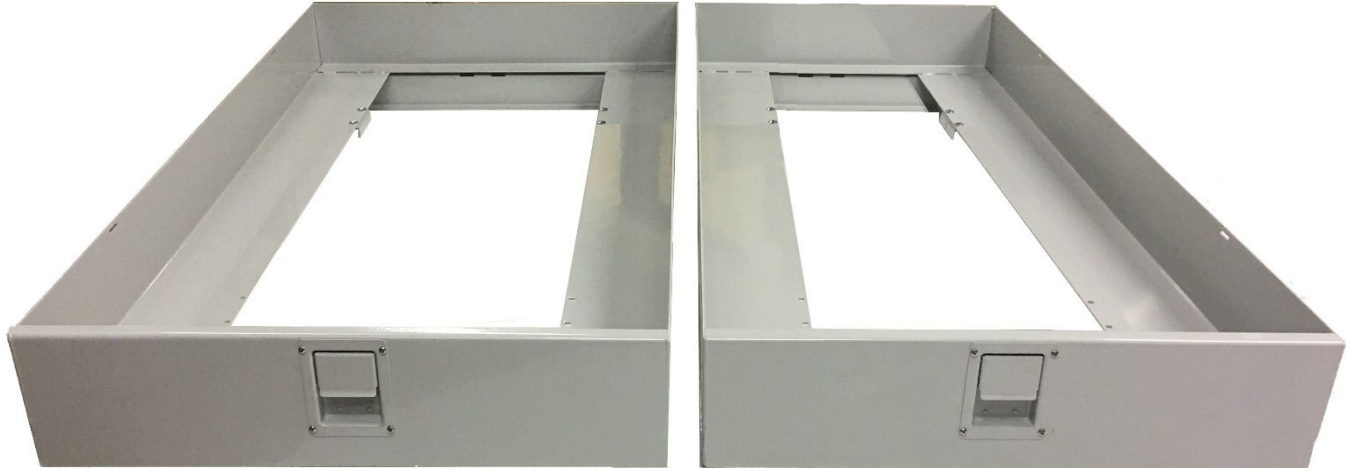


	OVERALL WIDTH	OVERALL DEPTH	OVERALL HEIGHT	WEIGHT	USABLE WIDTH	USABLE DEPTH	BEARING TYPE	EXTENSION %
<b>MCI4844-2RL</b>	48- $\frac{3}{8}$ "	44- $\frac{1}{4}$ "	9"	153 lbs.	47- $\frac{1}{2}$ "	41- $\frac{5}{8}$ "	ROLLER	70%



	OVERALL WIDTH	OVERALL DEPTH	OVERALL HEIGHT	WEIGHT	USABLE WIDTH	USABLE DEPTH	BEARING TYPE	EXTENSION %
<b>NUCT2756-RL</b>	26- $\frac{5}{8}$ "	56- $\frac{3}{8}$ "	8- $\frac{3}{4}$ "	90 lbs.	26- $\frac{3}{8}$ "	53- $\frac{5}{8}$ "	ROLLER	70%
<b>NUCT3556-RL</b>	34- $\frac{5}{8}$ "	56- $\frac{3}{8}$ "	8- $\frac{3}{4}$ "	107 lbs.	34- $\frac{3}{8}$ "	53- $\frac{5}{8}$ "	ROLLER	70%
<b>NUCT3856-RL</b>	37- $\frac{5}{8}$ "	56- $\frac{3}{8}$ "	8- $\frac{3}{4}$ "	110 lbs.	37- $\frac{1}{4}$ "	53- $\frac{5}{8}$ "	ROLLER	70%
<b>NUCT3956-RL</b>	38- $\frac{5}{8}$ "	56- $\frac{3}{8}$ "	8- $\frac{3}{4}$ "	112 lbs.	38- $\frac{3}{8}$ "	53- $\frac{5}{8}$ "	ROLLER	70%
<b>NUCT4356-RL</b>	42- $\frac{5}{8}$ "	56- $\frac{1}{2}$ "	8- $\frac{3}{4}$ "	110 lbs.	42"	53- $\frac{5}{8}$ "	ROLLER	70%
<b>NUCT4250-RL</b>	41- $\frac{5}{8}$ "	50- $\frac{1}{2}$ "	8- $\frac{3}{4}$ "	106 lbs.	41"	47- $\frac{5}{8}$ "	ROLLER	70%

# *Journeyman*® One-Way Heavy Duty Cargo Trays



**ONUCT3559RL**

**ONUCT3259RL**

34- <sup>3</sup> / <sub>4</sub> "	Overall Width	31- <sup>3</sup> / <sub>4</sub> "
59- <sup>1</sup> / <sub>2</sub> "	Overall Depth	59- <sup>1</sup> / <sub>2</sub> "
8- <sup>3</sup> / <sub>4</sub> "	Overall Height	8- <sup>3</sup> / <sub>4</sub> "
121 lbs.	Weight	116 lbs.
34- <sup>1</sup> / <sub>2</sub> "	Usable Width	31- <sup>1</sup> / <sub>2</sub> "
56- <sup>5</sup> / <sub>8</sub> "	Usable Depth	56- <sup>5</sup> / <sub>8</sub> "
ROLLER	Bearing Type	ROLLER
70%	Extension %	70%

# *Journeyman*® Two-Way Economy Cargo Trays



	OVERALL WIDTH	OVERALL DEPTH	OVERALL HEIGHT	WEIGHT	USABLE WIDTH	USABLE DEPTH	BEARING TYPE	EXTENSION %
<b>ENCT2691RL-2W</b>	26"	91- $\frac{1}{4}$ "	7- $\frac{7}{8}$ "	87 lbs.	25- $\frac{7}{8}$ "	86- $\frac{5}{8}$ "	ROLLER	70%
<b>ENCT2891RL-2W</b>	28- $\frac{3}{8}$ "	91- $\frac{1}{4}$ "	7- $\frac{7}{8}$ "	88 lbs.	28- $\frac{1}{8}$ "	86- $\frac{5}{8}$ "	ROLLER	70%
<b>ENCT3291RL-2W</b>	31- $\frac{7}{8}$ "	91- $\frac{1}{4}$ "	7- $\frac{7}{8}$ "	91 lbs.	31- $\frac{1}{2}$ "	86- $\frac{5}{8}$ "	ROLLER	70%

# *Journeyman*® Two-Way Deluxe Cargo Trays



	OVERALL WIDTH	OVERALL DEPTH	OVERALL HEIGHT	WEIGHT	USABLE WIDTH	USABLE DEPTH	BEARING TYPE	EXTENSION %
<b>NCT4091RL-2W</b>	40- $\frac{1}{8}$ "	91- $\frac{1}{8}$ "	7- $\frac{3}{4}$ "	147 lbs.	39- $\frac{7}{8}$ "	86- $\frac{1}{2}$ "	ROLLER	70%
<b>NCT4250RL-2W</b>	42- $\frac{1}{8}$ "	50- $\frac{3}{8}$ "	7- $\frac{3}{4}$ "	103 lbs.	41- $\frac{1}{2}$ "	45- $\frac{3}{8}$ "	ROLLER	70%
<b>NCT4291RL-2W</b>	42- $\frac{1}{4}$ "	91- $\frac{1}{2}$ "	7- $\frac{3}{4}$ "	149 lbs.	41- $\frac{3}{8}$ "	87"	ROLLER	70%



	OVERALL WIDTH	OVERALL DEPTH	OVERALL HEIGHT	WEIGHT	USABLE WIDTH	USABLE DEPTH	BEARING TYPE	EXTENSION %
<b>GBT-D</b>	10- $\frac{3}{4}$ "	28- $\frac{1}{4}$ "	3- $\frac{1}{2}$ "	30 lbs.	N/A	N/A	BALL	100%



	OVERALL WIDTH	OVERALL DEPTH	OVERALL HEIGHT	WEIGHT	USABLE WIDTH	USABLE DEPTH	BEARING TYPE	EXTENSION %
<b>GBTN-W</b>	26- $\frac{1}{4}$ "	12- $\frac{7}{8}$ "	3- $\frac{1}{8}$ "	21 lbs.	N/A	N/A	BALL	100%





# *Journeyman*<sup>®</sup> Tray Hardware



**Cables & Fitting**



**Latches**



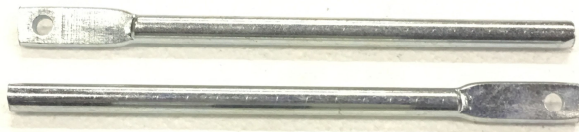
**Raw**

**Black**

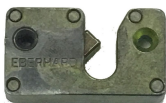
**Gray**



**Mounting Hardware**



**Squeeze Latch & Rods**



**Rod Catch**



**Roller Bearings**



**Ball Bearing Slides**



**Battery Straps & Hook Fastener**



**Cable Pin & Lanyard**

